



# IBM Software Group

# IBM Lotus Product Positioning

## Radovan (Radek) Dršata

## Lotus Brand Sales Leader CEMA

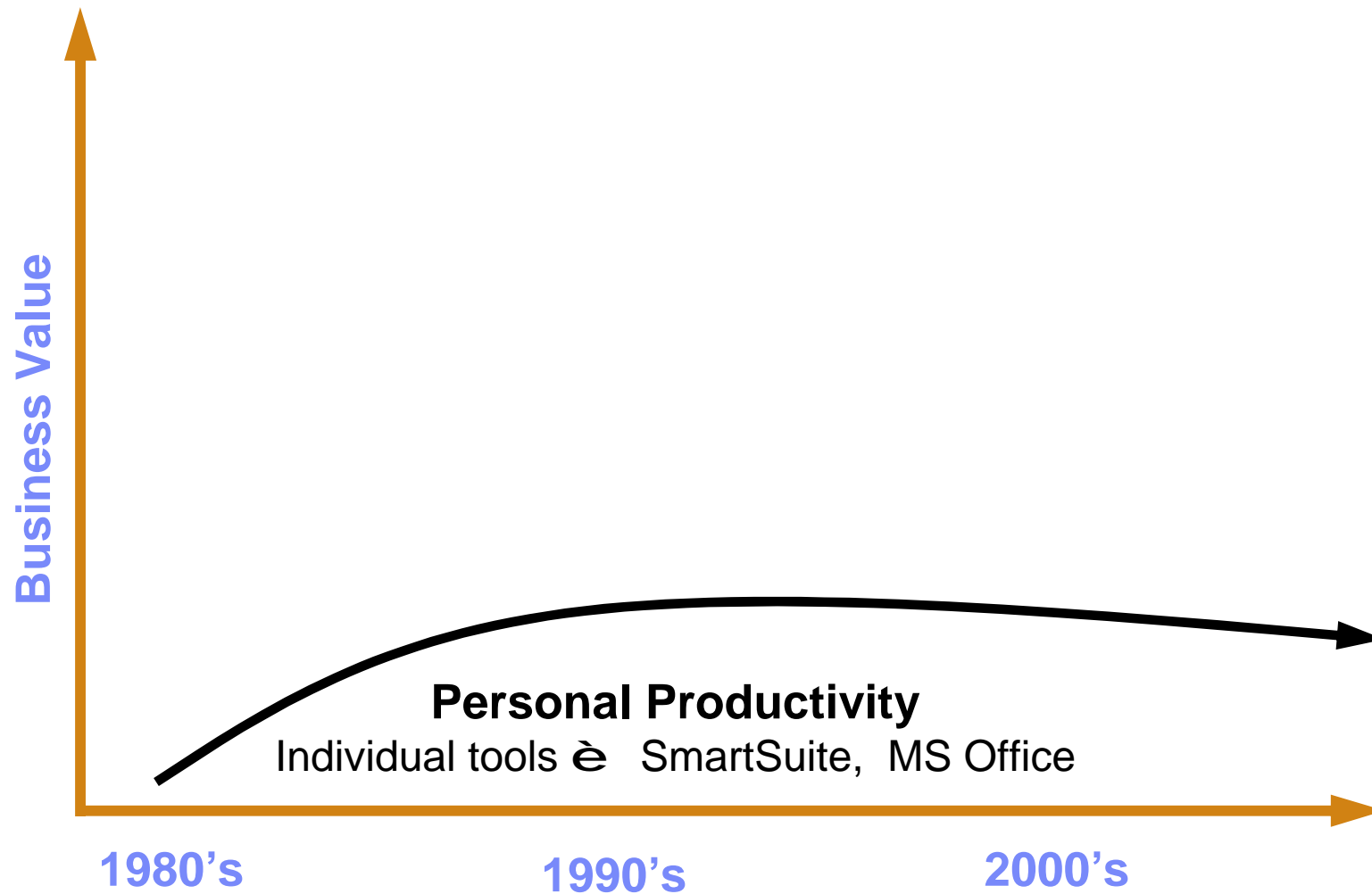


@business on demand software

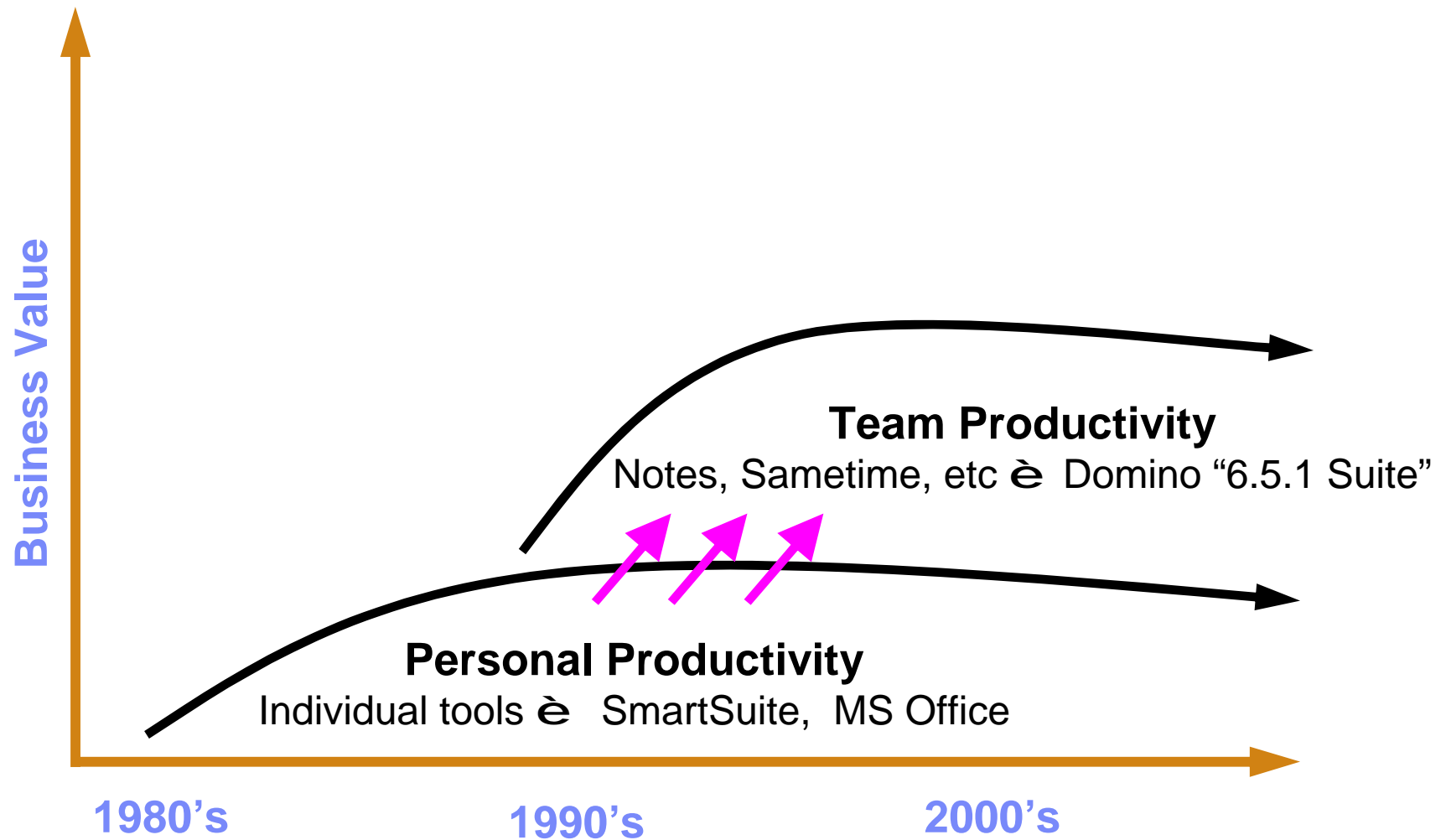
## IBM Workplace Client Technology- Products

- 1. Lotus Notes and Domino v 6.5.1**
2. WebSphere Portal
- 3. Lotus Workplace Messaging v 2.0 & Documents**
4. WebSphere Everyplace

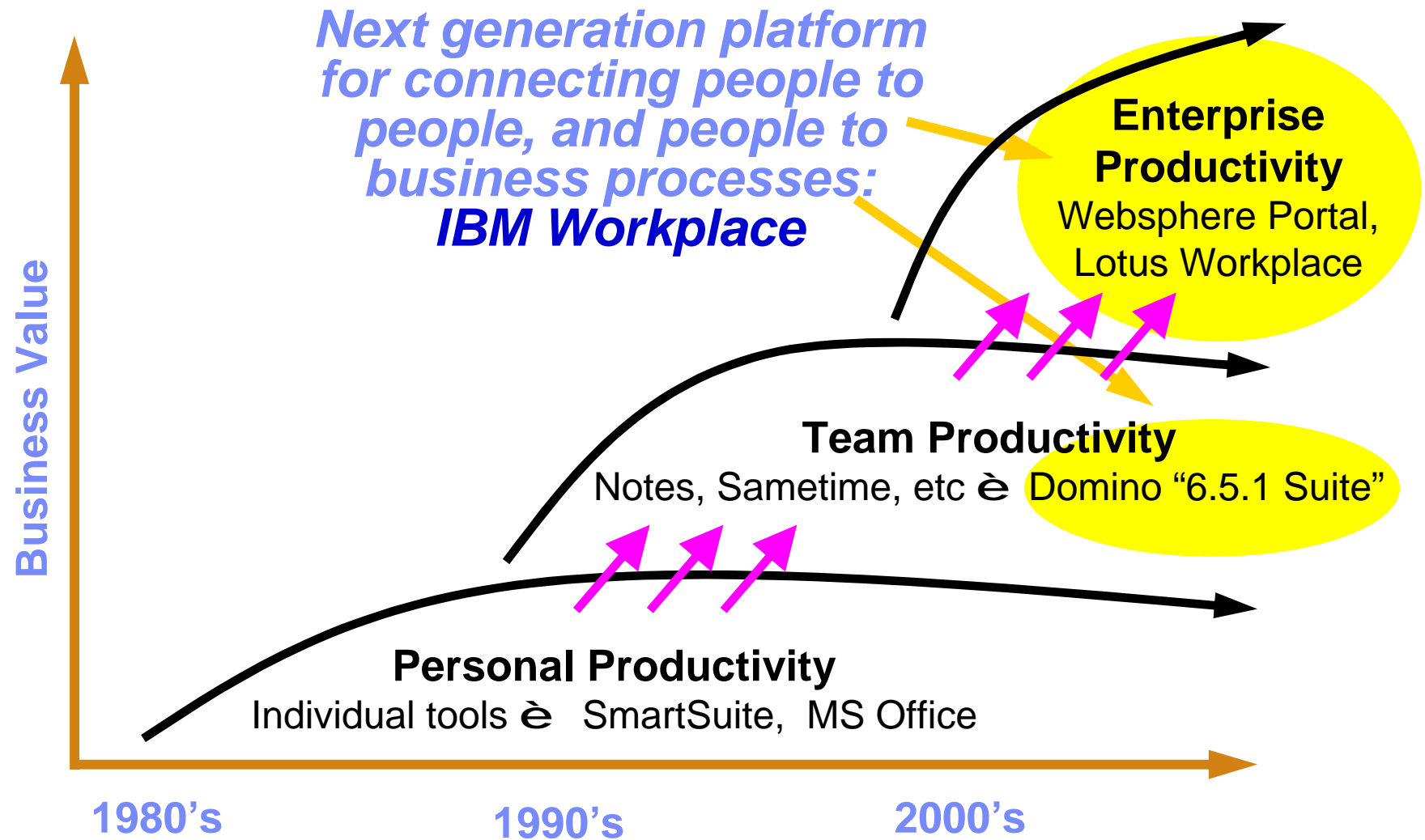
## Personal productivity ...



## Team productivity ...



## Enterprise productivity ...



# Scope of IBM Workplace Family of Products

*IBM Workplace is the family name for all user focused products*

## § Defining the Broad Continuum of Client Interactions –

Evolution of the computing paradigm

Server managed client model

Support for standards

Interoperable with existing elements of the infrastructure

Lotus Workplace

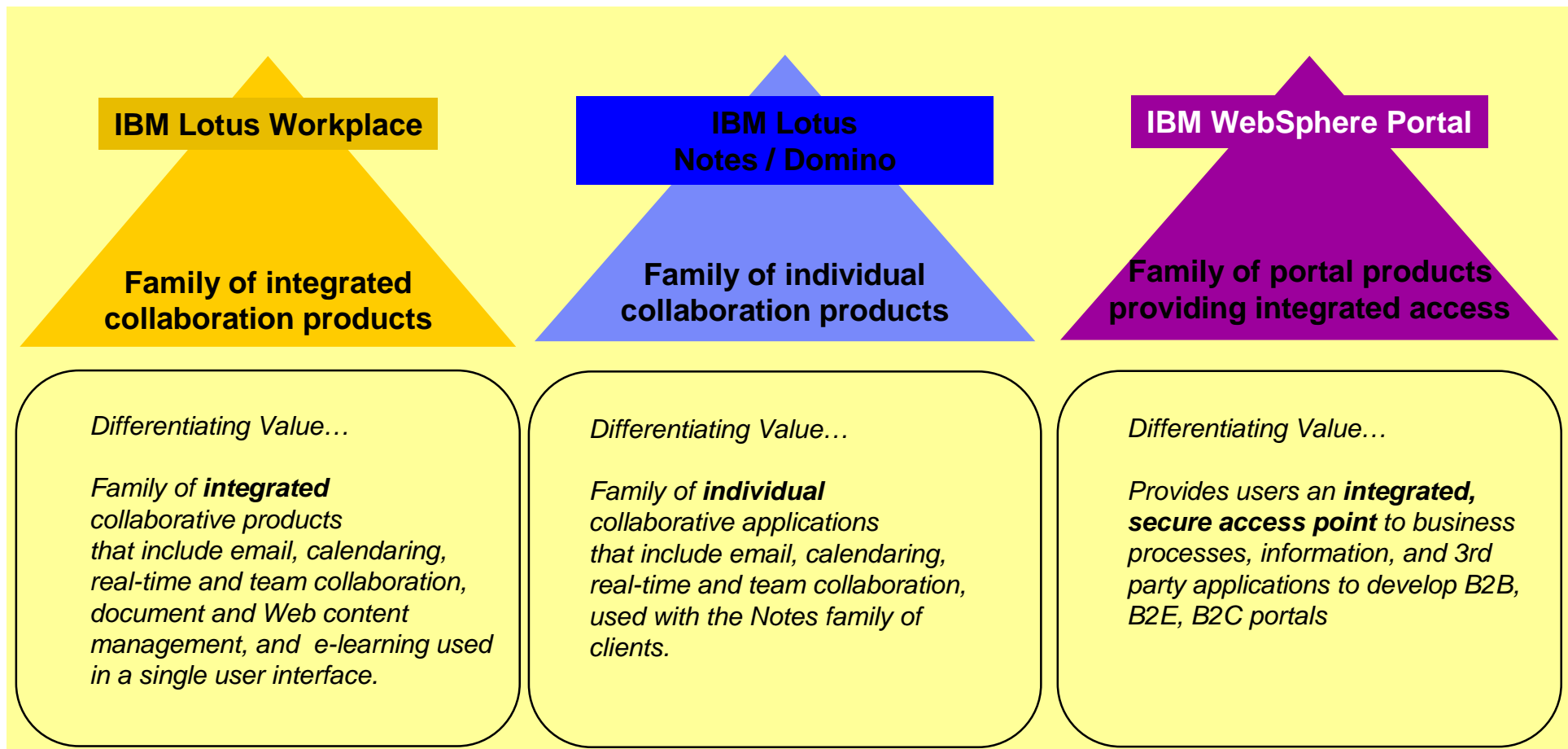
Websphere Everyplace

Lotus Notes/Domino

Websphere Portal

## Lotus Product Families

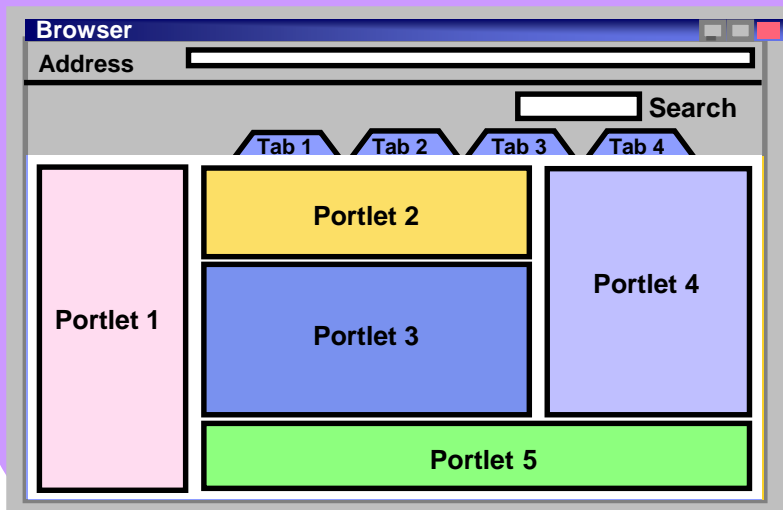
Differentiating Roles between Lotus Workplace, Notes/Domino and WebSphere Portal



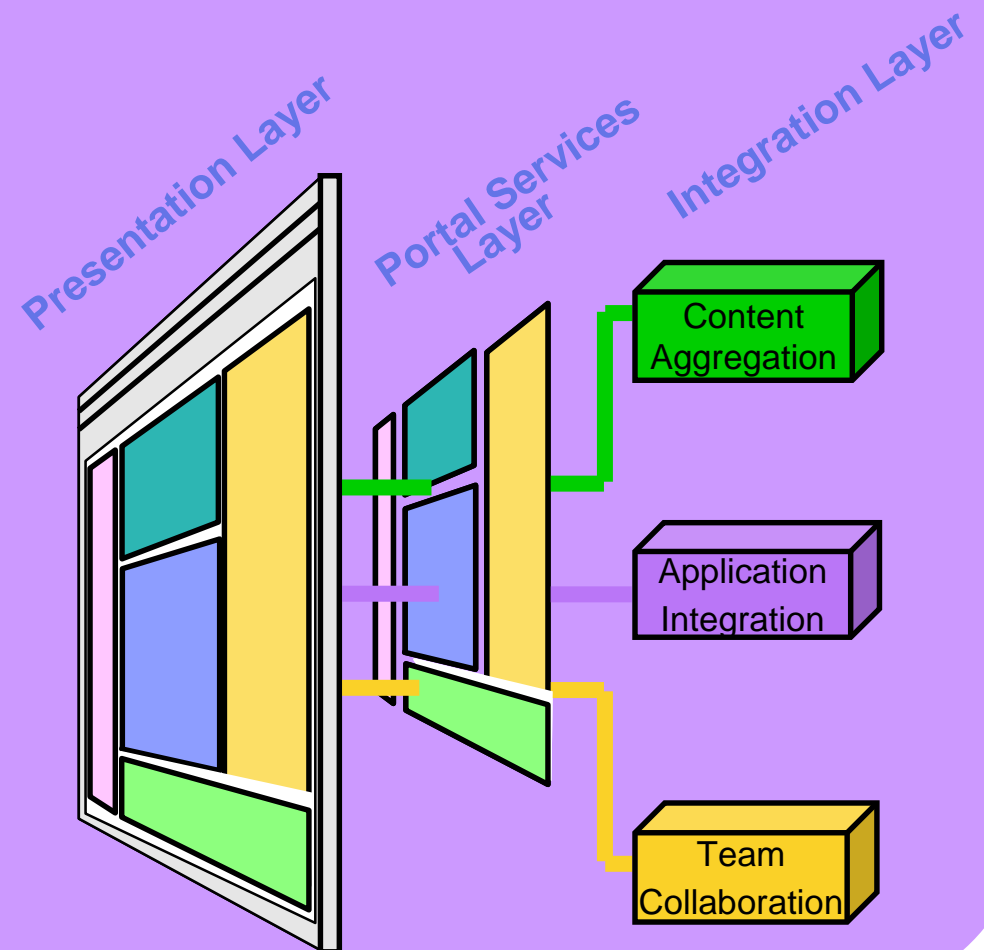
## A definition:- A Portal is...

### A User interface...

- Primarily a UI framework for integrating "other" applications, content and processes.
- Includes several additional features which add value to this integrated environment, like search, Single Sign-on, etc.



### ...and Integration



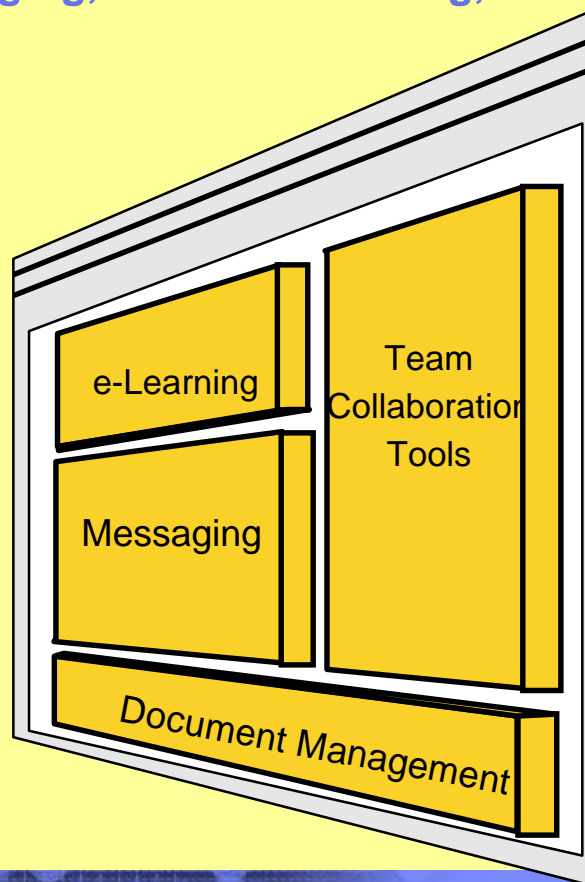


## A definition:- A Workplace is...

Primarily a family of integrated collaboration products which help people do their jobs more productively. Includes applications like e-mail, instant messaging, web conferencing, e-learning etc.

Four categories of workplace capabilities

*...and extending beyond the browser to a rich client experience in the 2.0 release*



### § Document Management

- Web Content Mgmt
- Enterprise Document Mgmt.

### § e-Learning

- Training development
- On-line training delivery
- Training Mgmt

### § Team Collaboration

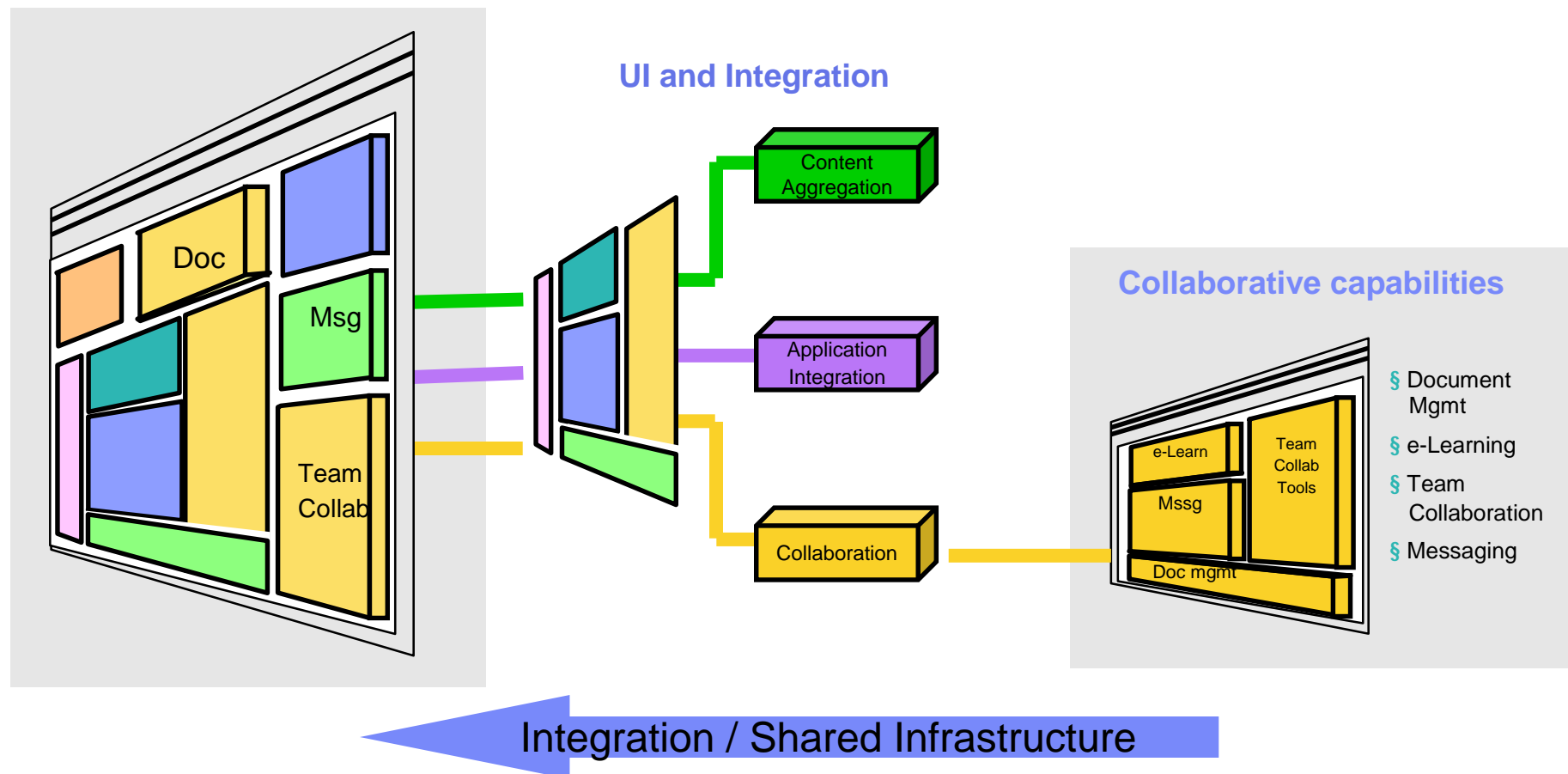
- Instant Messaging and presence awareness
- Web conferencing
- Team spaces

### § Messaging

- E-Mail
- Calendar
- Personal/Public address book

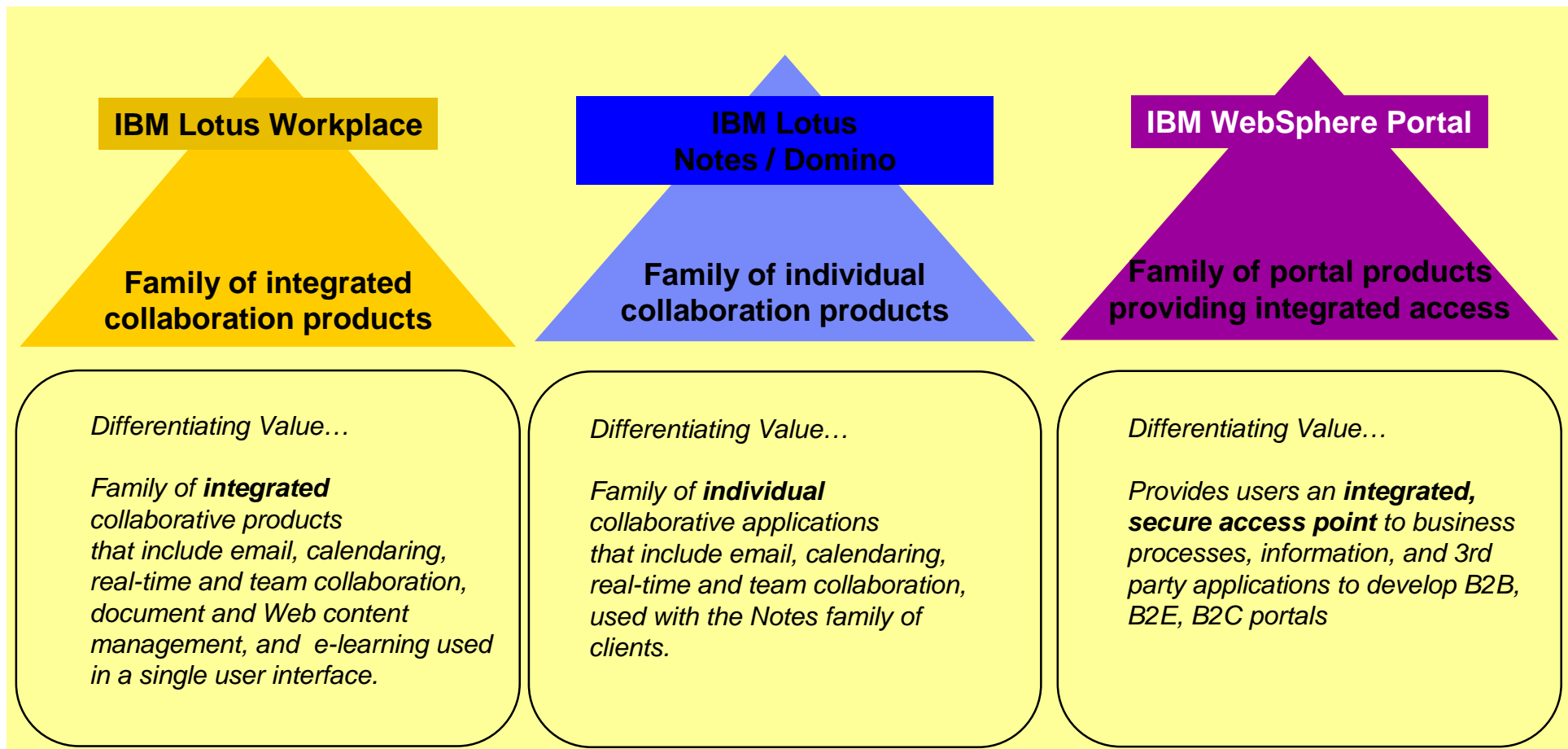
## ... and combining Portal & Workplace:

... they make up the software foundation for an On Demand Workplace



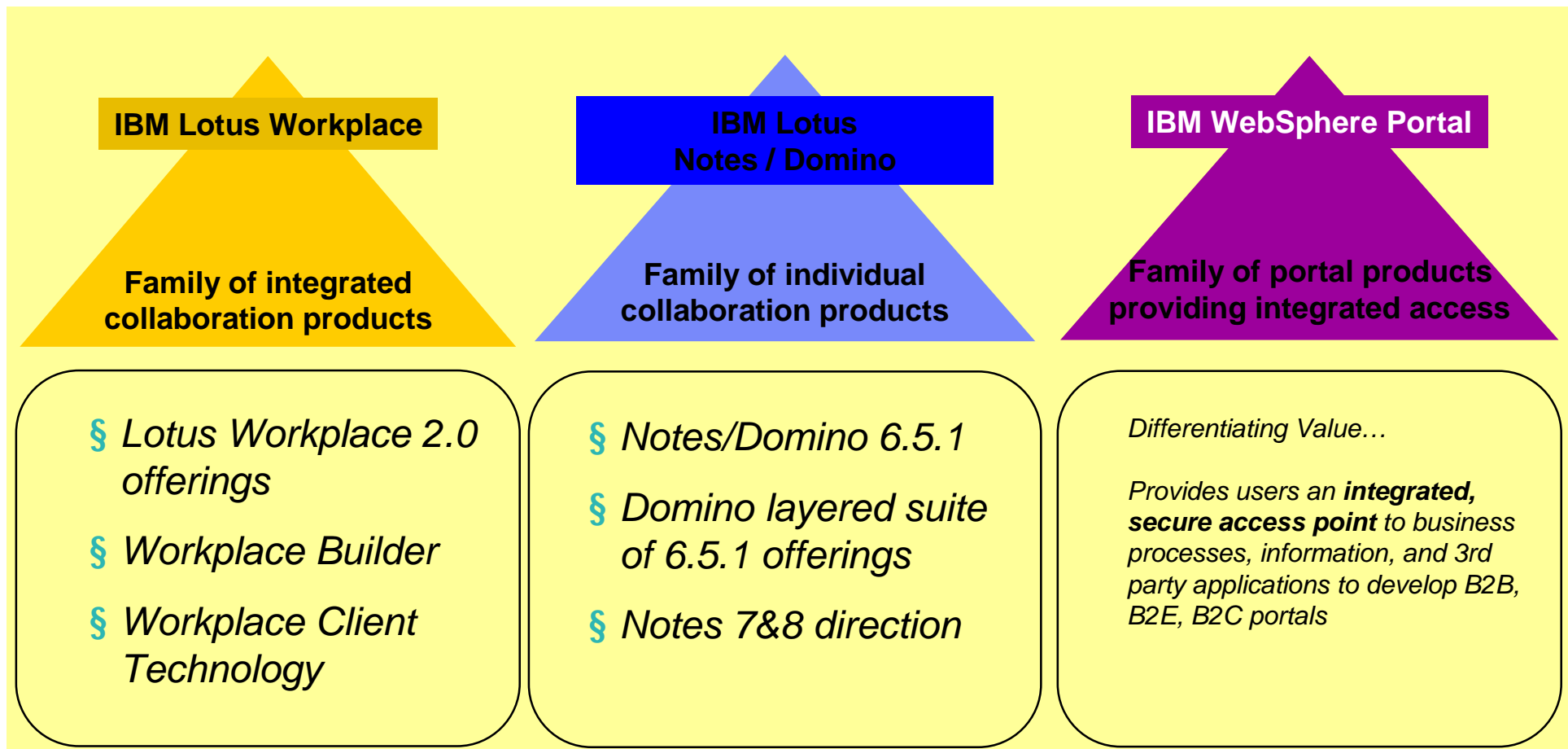
## Lotus Product Families

Differentiating Roles between Lotus Workplace, Notes/Domino and WebSphere Portal



## Lotus Product Families

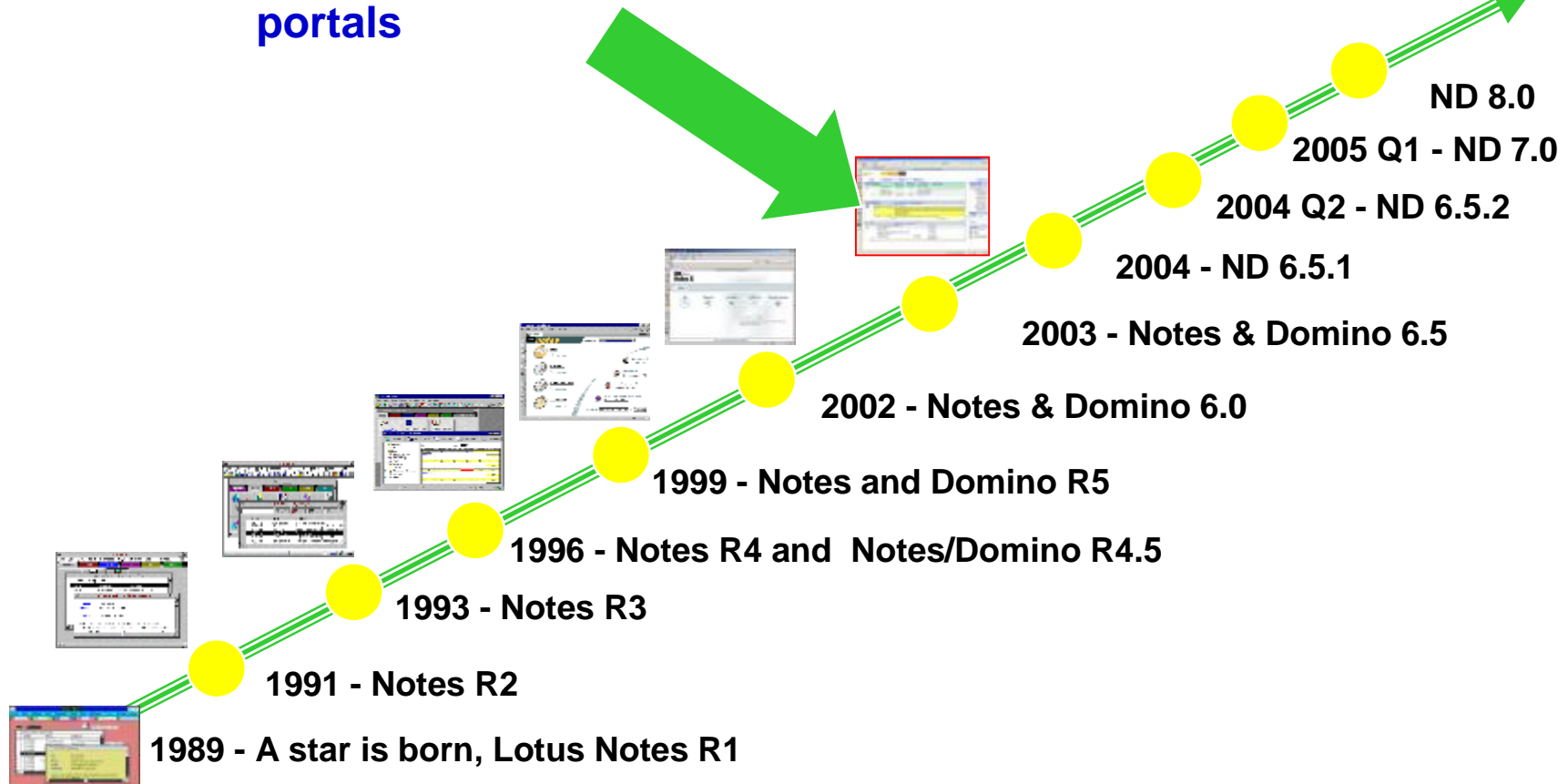
Differentiating Roles between Lotus Workplace, Notes/Domino and WebSphere Portal



## Continued Leadership In Messaging and Collaboration

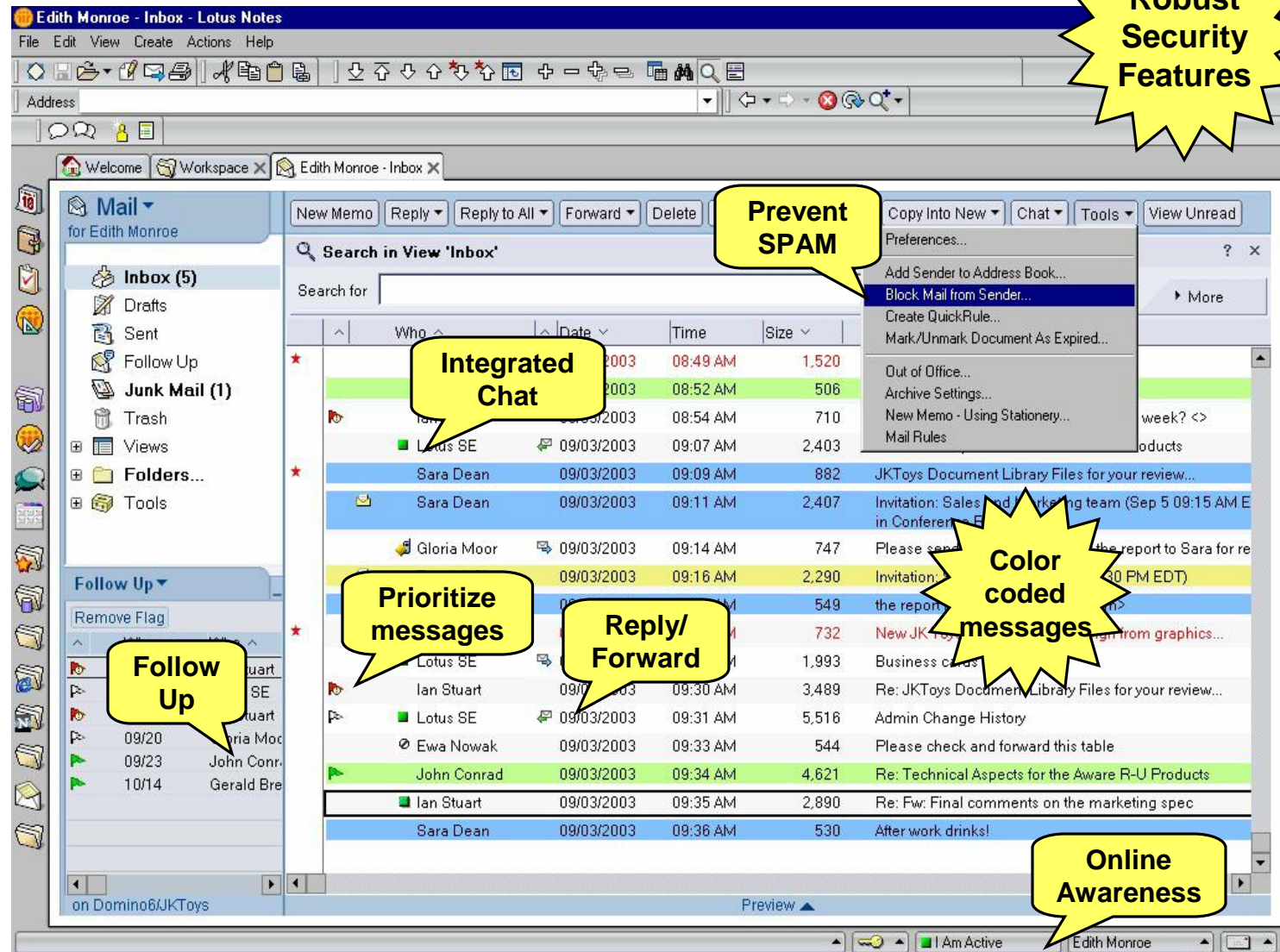
**Extending Domino to  
integrated collaboration and  
portals**

...continuing into the future



# IBM Lotus Notes 6.5.1

- § Smart Upgrade
- § Improved Productivity
- § Integrated Awareness and Chat Capabilities
- § SPAM control
- § Follow up
- § Compelling TCO
- § Calendaring Enhancements
- § ...





## IBM Lotus Notes/Domino 6.5.1 - Optimizing the Family

- § All products validated with Domino 6.5.1 platform and current WebSphere Portal 5.02 release
- § Coordination among releases helps reduce testing of individual products and applications running on the Domino server – helping to accelerate Time-To-Value
- § Integrated presence awareness and chat include with Lotus Notes, Domino Web Access, Domino Express, and the CEO bundles that include the above clients

### Core Notes/Domino Family

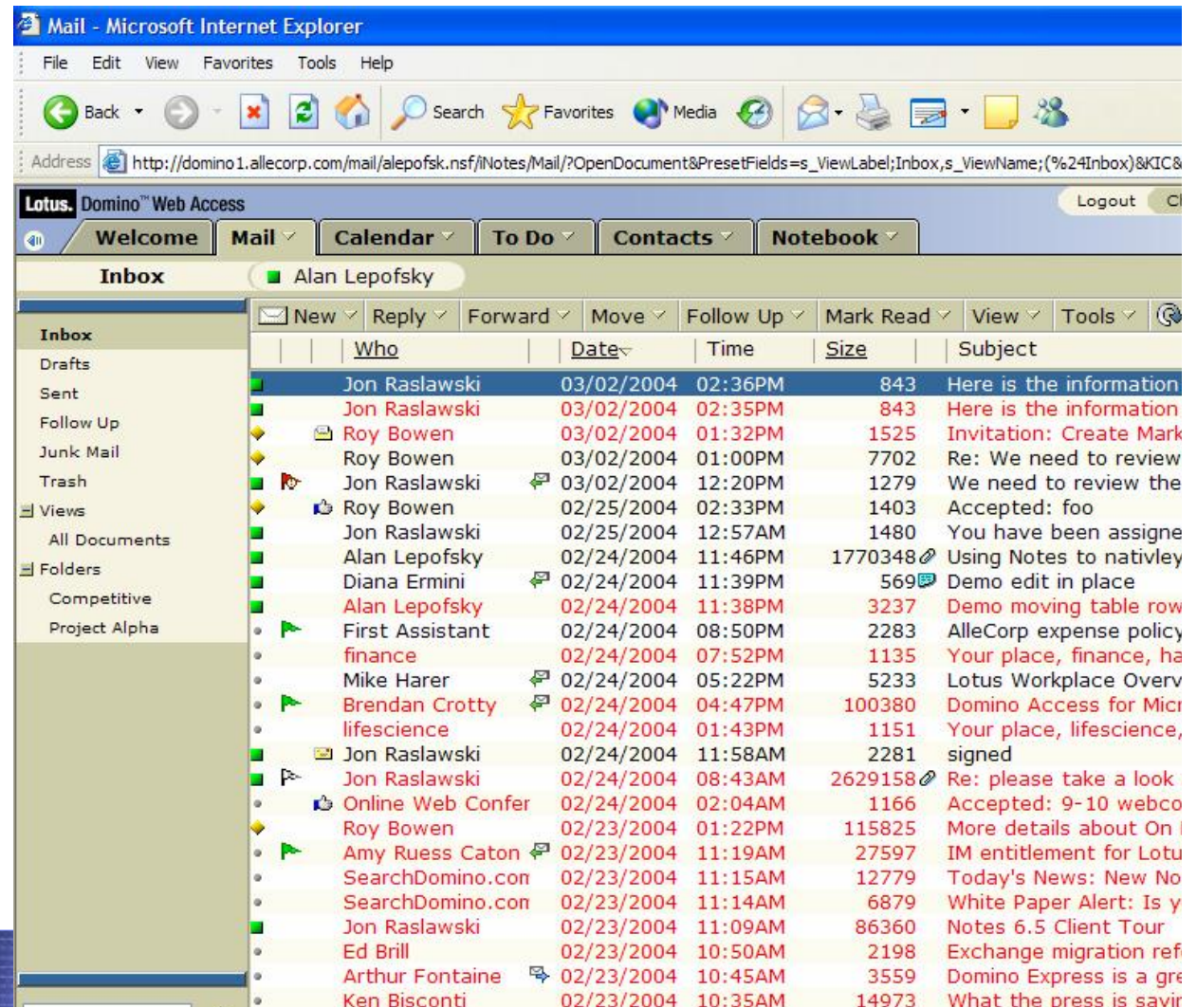
- § Lotus Notes
- § Lotus Domino
- § Lotus Domino Web Access (iNotes)
- § Lotus Domino Access for Outlook
- § Lotus Domino Designer
- § Lotus Enterprise Integrator
- § Lotus Domino Toolkit for WebSphere Studio

### Extended Products

- § Lotus Instant Messaging and Web Conferencing (Sametime)
- § Lotus Team Workplace (QuickPlace)
- § Lotus Domino Document Manager (Domino.Doc)
- § Lotus Workflow
- § Lotus Workplace Web Content Management
- § Sample pages for Domino based products deliver a dynamic collaborative Workplace within WebSphere Portal

*Browser-based access to Lotus Domino for messaging, collaboration and PIM capabilities helps integrate people with business processes*

- § First-ever, end-to-end collaborative solution for Linux
- § Integrates Lotus Instant Messaging functionality
- § New features improve user productivity
- § Helps reduce total cost of ownership
- § Improved scalability and performance
- § Provides a security-rich environment: Encrypted mail, off-line capabilities, ...





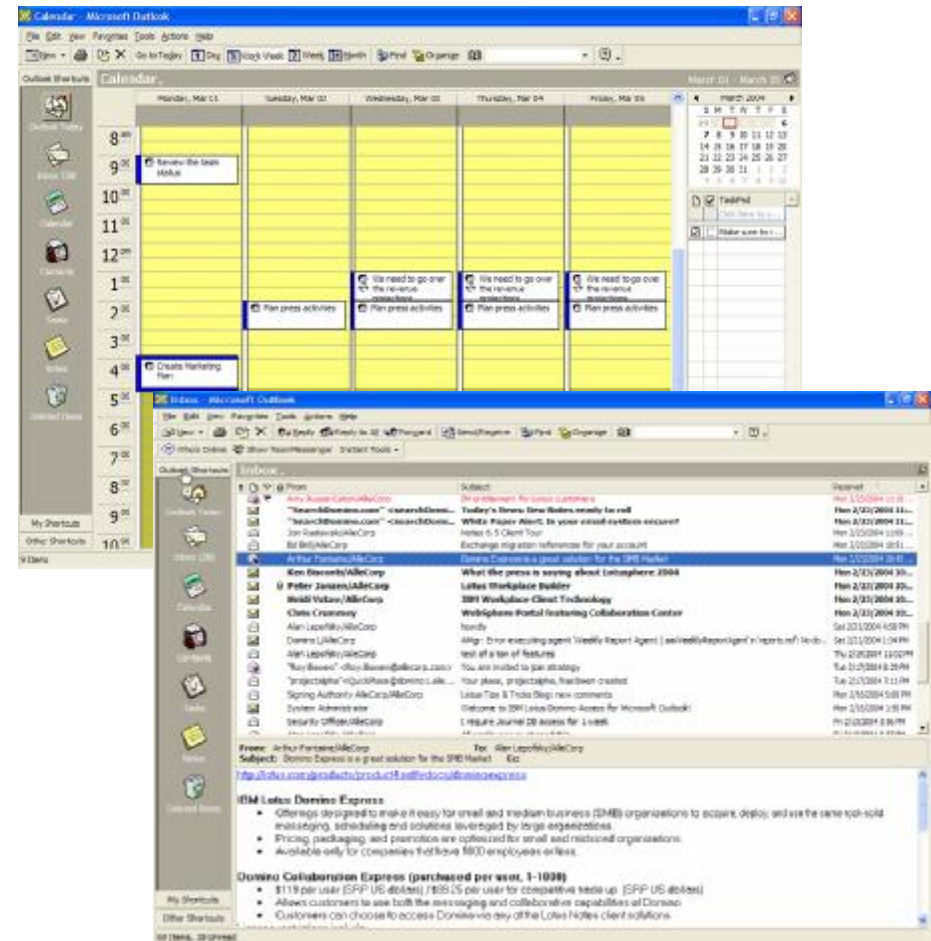
# Domino Access For Microsoft Outlook

## New features

- § Capability to use MS Outlook 2000 and XP against a Domino 6.5 or 6.03 and higher server.
- § Utilizes Notes replication mechanism to synchronize the Outlook pst file with Domino for Mail, Calendar and Contacts.
- § User now only accesses local data – improves performance
- § IMAP/iCal support replaced by NRPC
- § Provides capability to decrypt Notes and X509 mail.
- § Provides access to key Domino preferences from within Outlook.
- § Data migration between Exchange and Domino has been improved

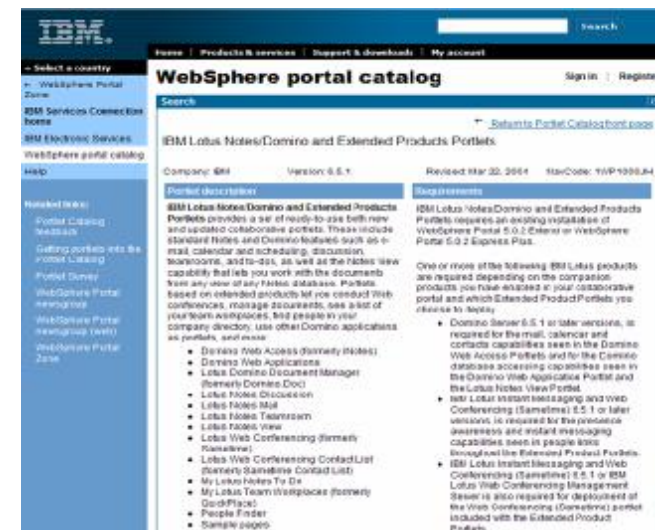
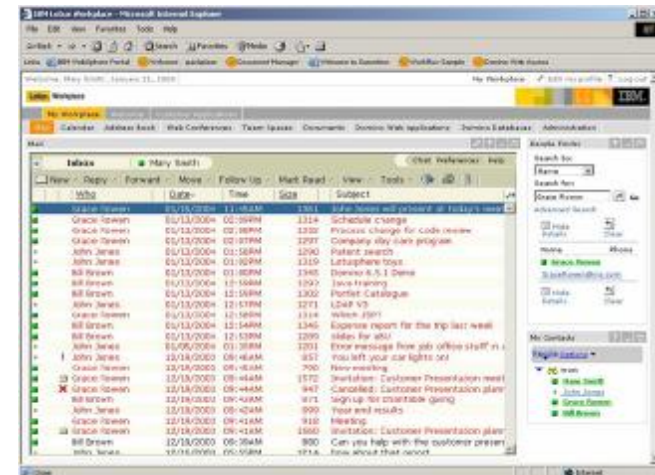
## Benefits

- § Accommodate Outlook client on desktop
- § Low user retraining
- § No costs associated with desktop change
- § All the benefits of Domino



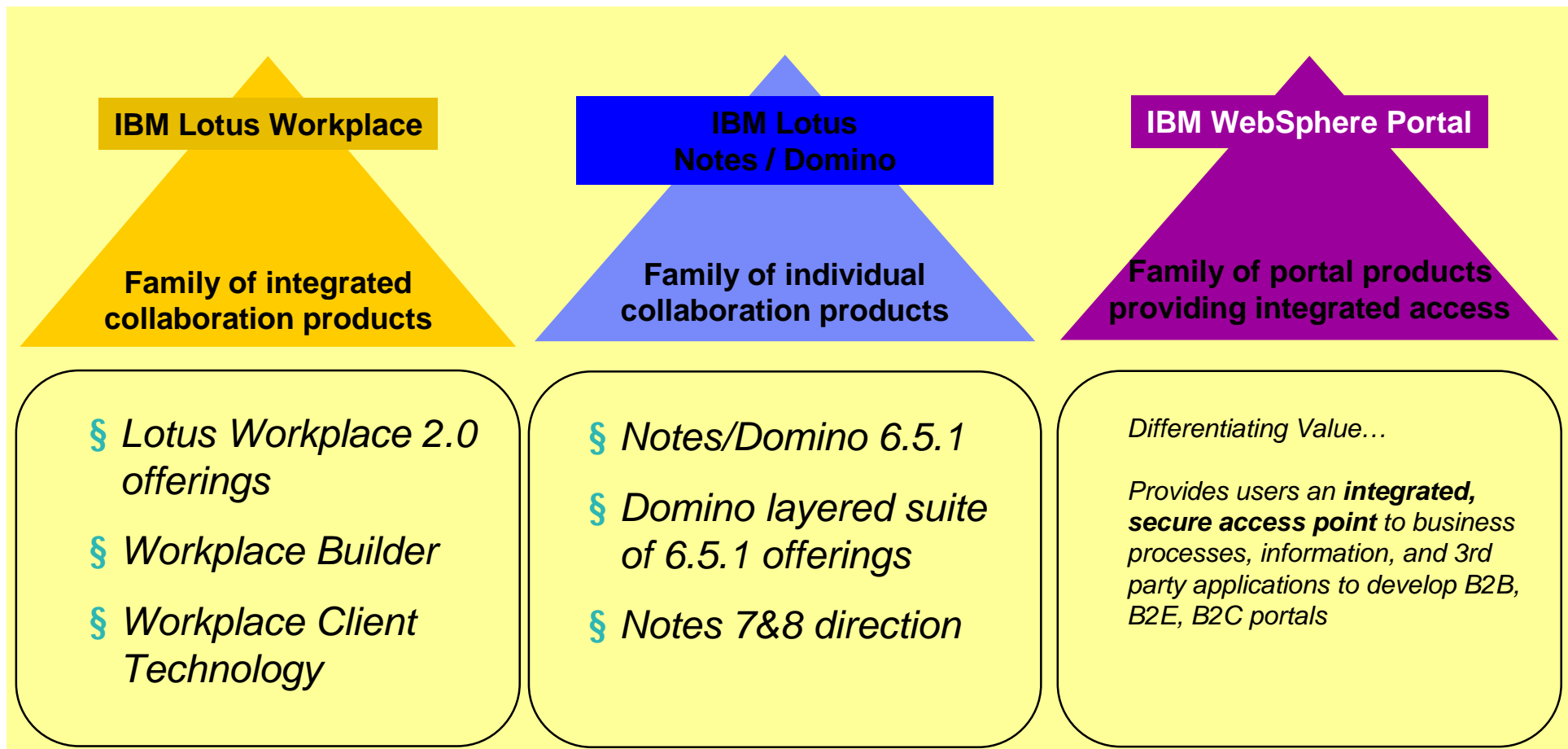
# Domino Family Portlets

- § Applies Workplace principles to Notes & Domino product line
- § Demonstrates the continuing value and investment in Notes/Domino and the extended products
- § Appearance of Portlets and Sample Portal Page will be consistent with Lotus Workplace
- § Portlets will be tested with Domino 6.5.1 and Portal 5.0.2 , **and future versions of WebSphere Portal as they are released**
- § Domino 6.5.1 will be supported with Portal 5.0.2 **and future versions of WebSphere Portal as they are released**

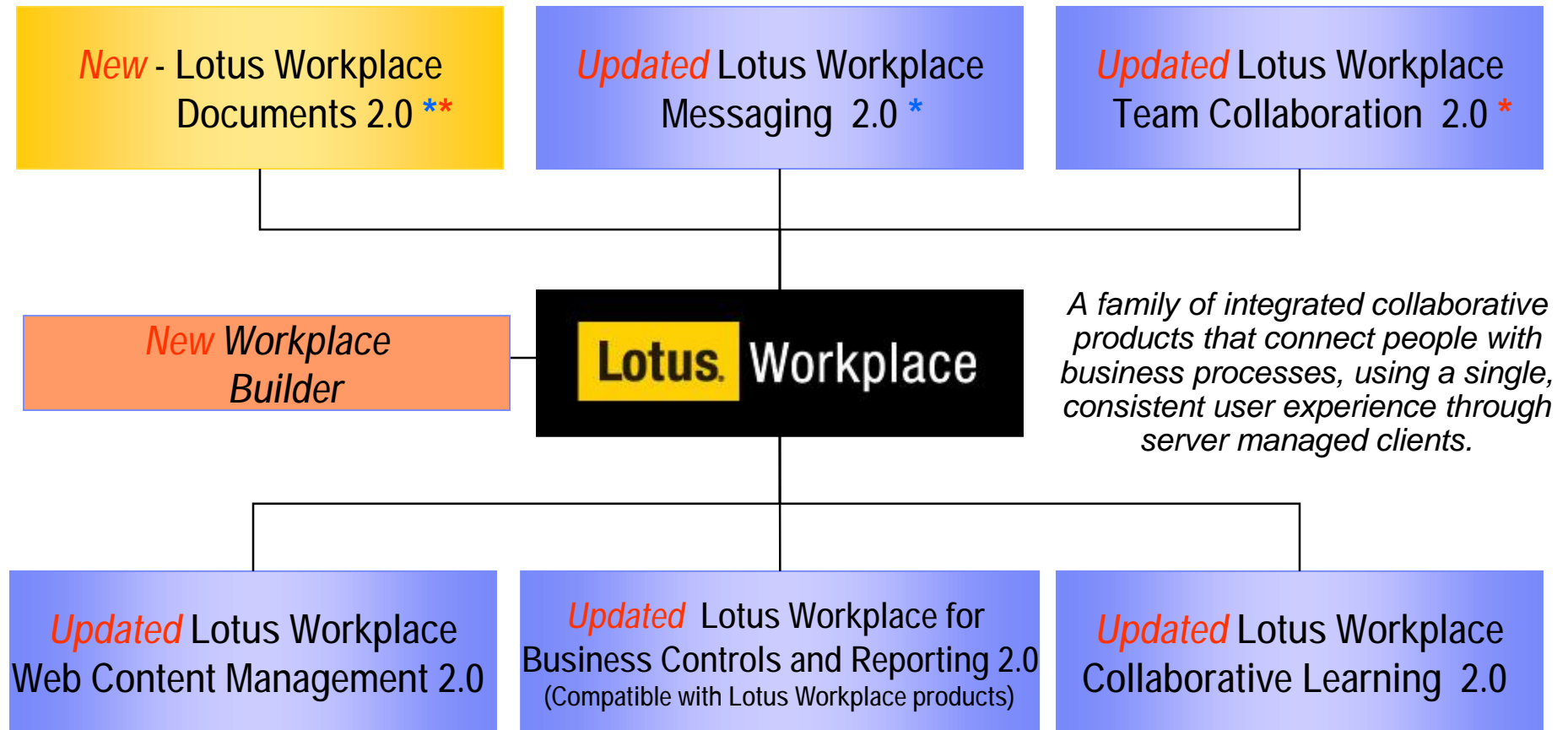


## Lotus Product Families

Differentiating Roles between Lotus Workplace, Notes/Domino and WebSphere Portal



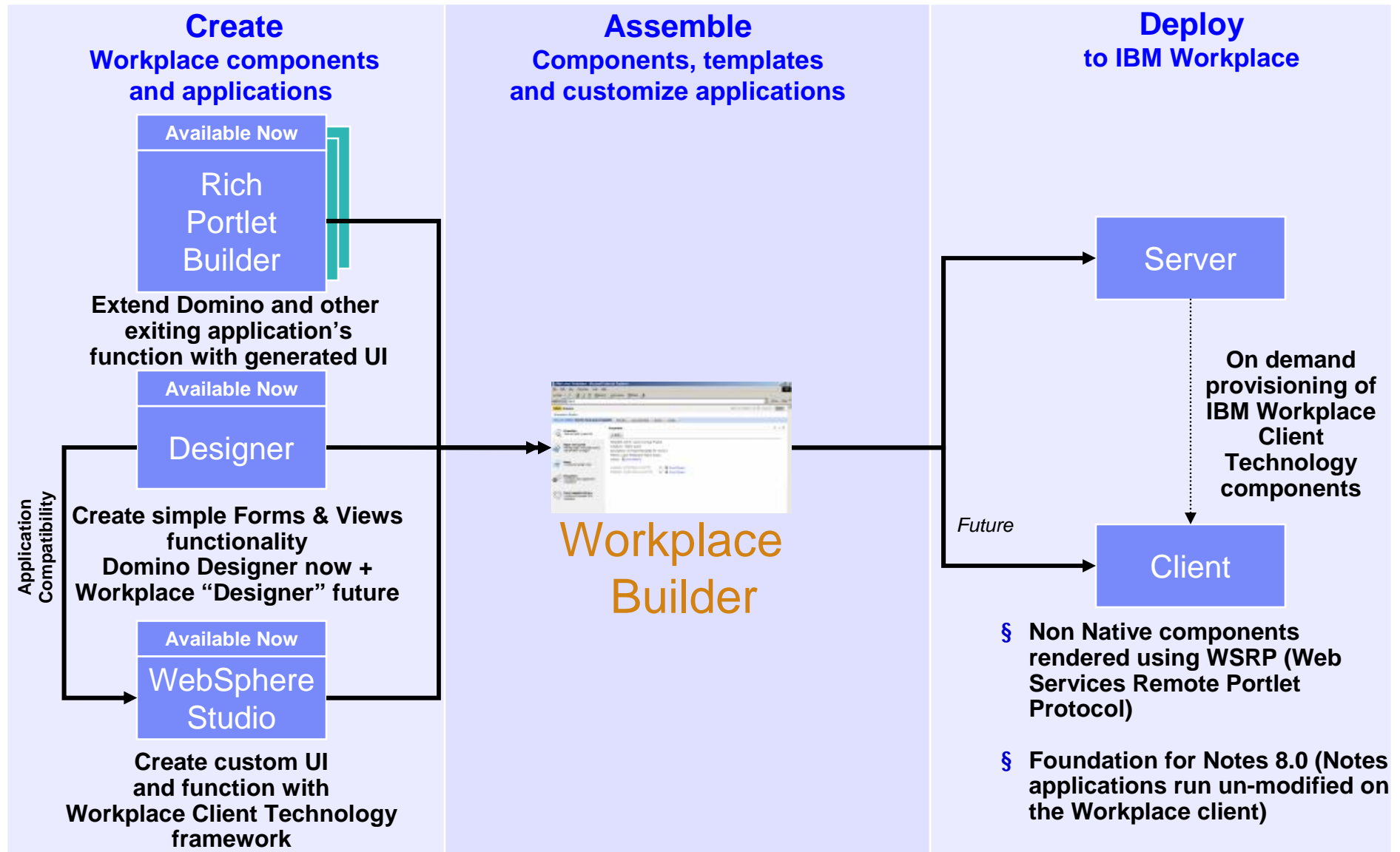
## Announcing Today...Collaborative Products & Capabilities



*\*Utilizing IBM Workplace Client Technology*

*\* Includes the new Workplace Builder*

# Tools for Workplace Applications





# Lotus Workplace builder – powerful end user tool

Customize and create new Workplaces, templates or forms for specific business purposes

## § Self-service tool designed for business users to easily work with the Workplace templates included with a specific product,

Create an application from a template without coding

Customize workplace applications

Create and modify templates

Administrative controls defined by policy

assign access controls or create new forms without having to rely on IT

## § Benefits

Reduce costs for developing collaborative applications - can be built by business users with a browser

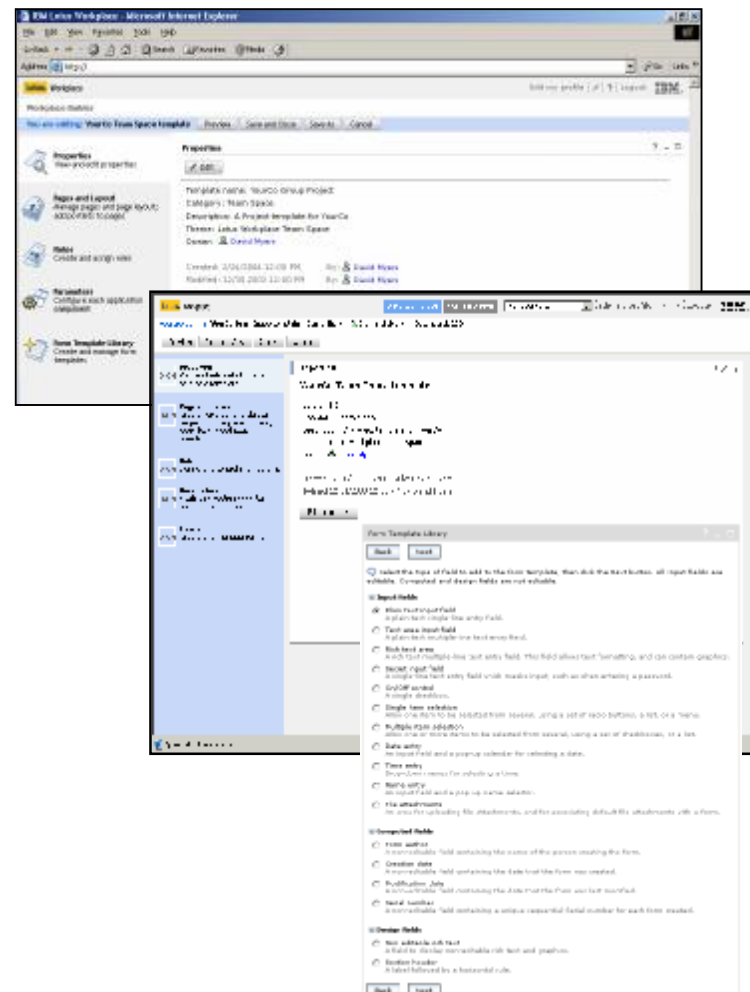
Reduce time to value – templates may be reused and modified

Lower IT Costs - self-service administration by the business owner for creation and access control

Ease the learning curve - uses familiar portal tools by sharing a common layout with WebSphere Portal

Reuse existing applications and content – Notes/Domino, SAP, JDBC, HR, etc.

- § Available with Lotus Workplace Team Collaboration 2.0
- § Available with Lotus Workplace Documents 2.0
- § Available for rest of portfolio in upcoming releases



# Key Deliverables Expected within next Twelve Months

2Q04

3Q04

4Q04

1Q05

2Q05

## Lotus Workplace Products 2.0

- Rich Client (including disconnected)
- Collaborative Documents
- Workplace Builder
- Enhance 1.1 products

## IBM Lotus Notes/Domino 6.5.1 products

- Synchronize Domino family products
- Domino Based
- Lotus Instant Messaging & Web Conferencing
- Lotus Team Workplace
- Domino Document Manager

## Lotus Workplace Products 2.5

- iSeries, Solaris Server Support
- Expanded Data Store Support
- Continued API build-out
- Enhanced Tooling
- Rich Clients for Portlets
- ISV Tools for Rich Client Applications
- Mobile Rich Client
- Tech preview for Notes/Domino plug-in for Linux

## IBM Lotus Notes/Domino 7.0 products

- Tighter integration between Domino family applications
- Tighter integration with Workplace
- Continued focus on TCO
- Administration, performance and scalability improvements.
- Enhanced Application Development with DB2 storage and native web services
- Workplace for Notes Application

WebSphere Portal Enable &  
Extend 5.02

WebSphere Portal Express  
& Express Plus 5.02

WebSphere Portal V5.0x

WebSphere Portal  
5.1

WebSphere Portal  
Enable & Extend for  
z/OS V5.1

## Early Adopters of Workplace Client Technology





## IBM Workplace Client Technology Project Office



### § What the Project Office will do:

- Drive successful sales execution for all Workplace Client sales engagement in 2004
- Provide a methodology for introduction of the technology including a fee-based pilot offering
- Manage customer pilots to ensure successful roll-out and design partner feedback
- Answer/Route inquiries specific to IBM Workplace Client Technology opportunities
- Provide a focal point for resources, tools and content necessary for success
- Act as a resource for Qualification, Preparation and installation of Workplace Client technology on live customer infrastructure
- Leverage existing teams to help manage communication and enablement efforts

### § How to Reach us:

IBM Workplace Client Technology Project Office Intranet Page

[http://w3-3.ibm.com/software/persite.nsf/SWGFeature/client\\_technology](http://w3-3.ibm.com/software/persite.nsf/SWGFeature/client_technology)

Email the WCT Project Office at: **WCT PO/Raleigh/IBM** or [wctpo@us.ibm.com](mailto:wctpo@us.ibm.com)

# Lotus Software Tools Strategy –

## Expand the Developer Population by Addressing a Range of Roles

Enable different types of users with different skills

Optimize tools for each platform

Make platforms and tools work well together

### **LOB Business Users/Administrators**

- ü Require easy to use, task-oriented tools

- ü Workplace Builder

### **LOB Developers**

- ü Require highly productive, visual tools

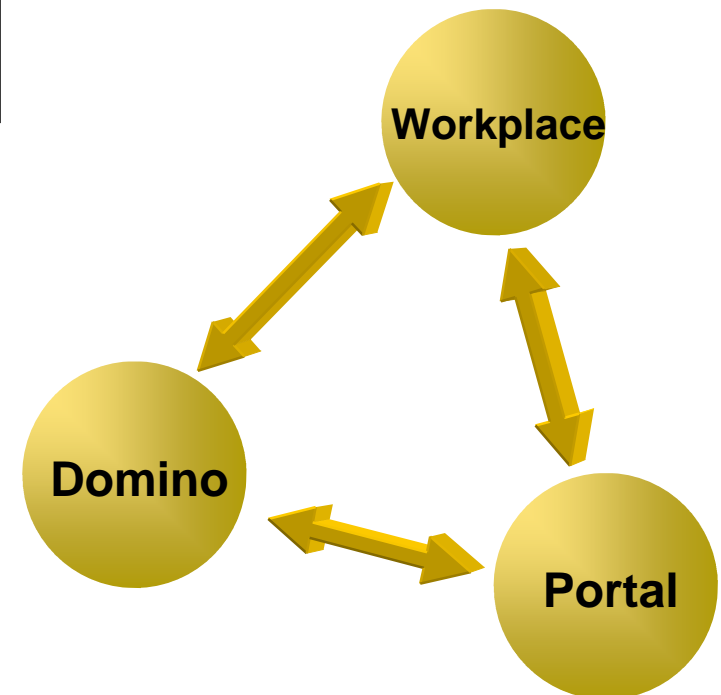
- ü Domino Designer & Lotus Enterprise Integrator

- ü Workplace “Designer”

### **J2EE Developers**

- ü Require powerful extensions to the platform

- ü WebSphere Studio + Toolkits



# Target customers for Lotus Workplace products 2.0

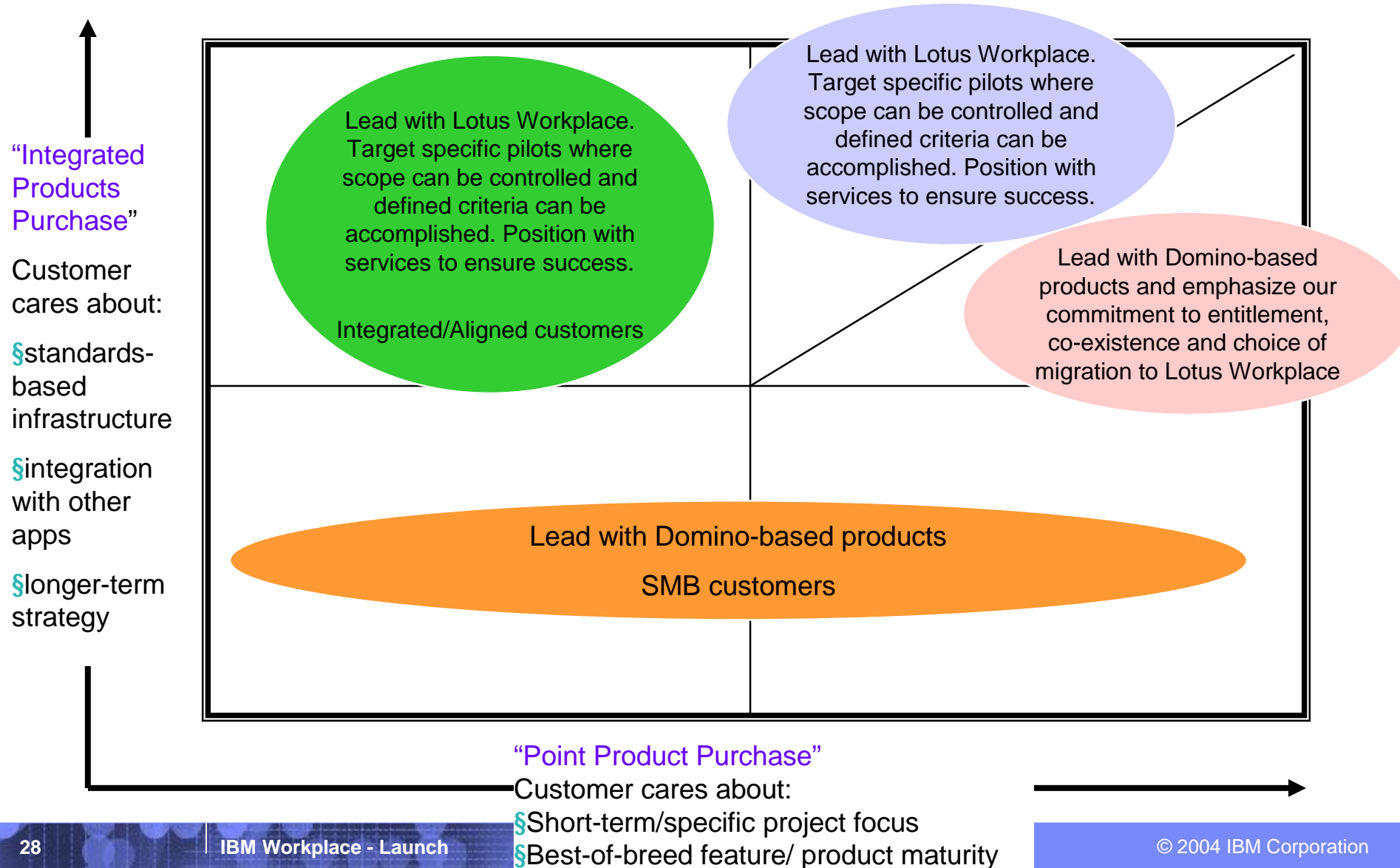
## New customers

- § New customers that haven't purchased Collaboration, Learning, Web Content Management or Email for all users !
- § Focus your prospecting efforts on new license sales to:
  - Customers committed to J2EE/open standards
  - WAS and/or Portal upsell
  - DB2 CM upsell (natural front end to CM)
  - Domino customers that haven't bought our advanced collaboration products
  - Microsoft customers disillusioned with vendor lock-in, hidden pricing and licensing costs
- § **2.0 products are NOT** targeted to migrate existing Notes, Lotus Instant Messaging & Web Conferencing (Sametime), Lotus Team Workplace (Quickplace), Domino Document Manager etc customers

- § **CIO** who has a vested interest in reducing costs across the multiple collaboration infrastructures in place today
  - Help your customers understand Lotus Workplace
  - DRAMATICALLY simplifies how IT organizations will manage collaboration in the future
  - Focus on integration and leverage of existing directories, databases, platforms, LDAP, Domino applications, WebSphere environment
- § **LOB** executive that wants to reduce the complexity and hassles users have to go through to get the job done

# Workplace or Domino family for new customers?

2004 guideline for what to sell when based on your customers needs



## For more information...

### **See our Web sites**

[www.ibm.com](http://www.ibm.com) IBM home page

[www.ibm.com/lotus](http://www.ibm.com/lotus) Lotus software home page

[www.ibm.com/lotus/workplace](http://www.ibm.com/lotus/workplace) Lotus Workplace home page

### **Whitepapers (coming soon)**

Lotus Workplace 2.0

Lotus Workplace Capacity Planning and TCO

IBM Workplace Client Technology—Strategy

### **Red Books (coming soon)**

IBM Workplace Client Technology – Technical Overview

IBM Workplace Client Technology – Technical Overview and Sample Apps for ISVs

IBM Workplace Client Technology – “How to Guide” for ISVs

### **And much, much more...**

